

Ripplestone Installation Guide

Ripplestone uses InstallShield to install the software. The install wizard will guide you through the install process. This guide can be used to help prepare your server for the installation and provide you with a better understanding of the steps executed during the install.

System Requirements

Ripplestone runs on the Microsoft platform using IIS and the .NET Framework version 1.1. The following are the required and recommended hardware and software.

Minimum Hardware Requirements

- Windows Server 2003, Windows 2000 or Windows XP Professional
- 2GB of RAM
- 2.0 GHz Processor
- 150 MB of hard drive space

Software Requirements

- IIS needs to be installed and activated (this is NOT the default setting for either Windows Server 2003 or Windows XP Pro)
- .NET Framework version 1.1 (this will be installed by the Ripplestone install if not present but better to have it installed before the Ripplestone installation)
- Crystal Reports Developer Edition (this is a license requirement of Business Objects and the Ripplestone software can be installed and used without first installing the Crystal Reports software)
- SQL Server 2000 or later (if you choose to use SQL Server as the Ripplestone database). The Express edition can also be used.

Other Requirements

- You must have Administrator privileges to correctly install Ripplestone

Overview of Installation

There are many steps in the installation of Ripplestone. Most of these are completed by the installation wizard. The list below summarizes the steps that will take place during the installation.

- Create a folder at C:\Program Files\Ripplestone
- Indicate if you want to use Microsoft Access or Microsoft SQL Server as the Ripplestone database.
- Copy web site files to the folder (C:\Program Files\Ripplestone)
- Install the Crystal Reports XI Release 1 Engine
- Create a Virtual Directory under the default web site in IIS called Ripplestone
- Grant Full permissions to Everyone for the C:\Program Files\Ripplestone\Data folder
- Register the Ripplestone Scheduler as a Windows Service
- Grant Full permissions to the ASP.NET temporary folders
- Grant Full permissions to Everyone for the C:\Program Files\Ripplestone\ReportFolders folder
- **Windows Server 2003 Only** – Grant Full permissions to the IIS_WPG group for the ReportFolders and Data folders.
- **Windows Server 2003 Only** – Allow ASP.NET Web Service Extension
- **SQL Server Only** – Start the database install utility.

InstallShield Wizard Steps

Microsoft Access

This set of screen shots are for using Microsoft Access as the database.

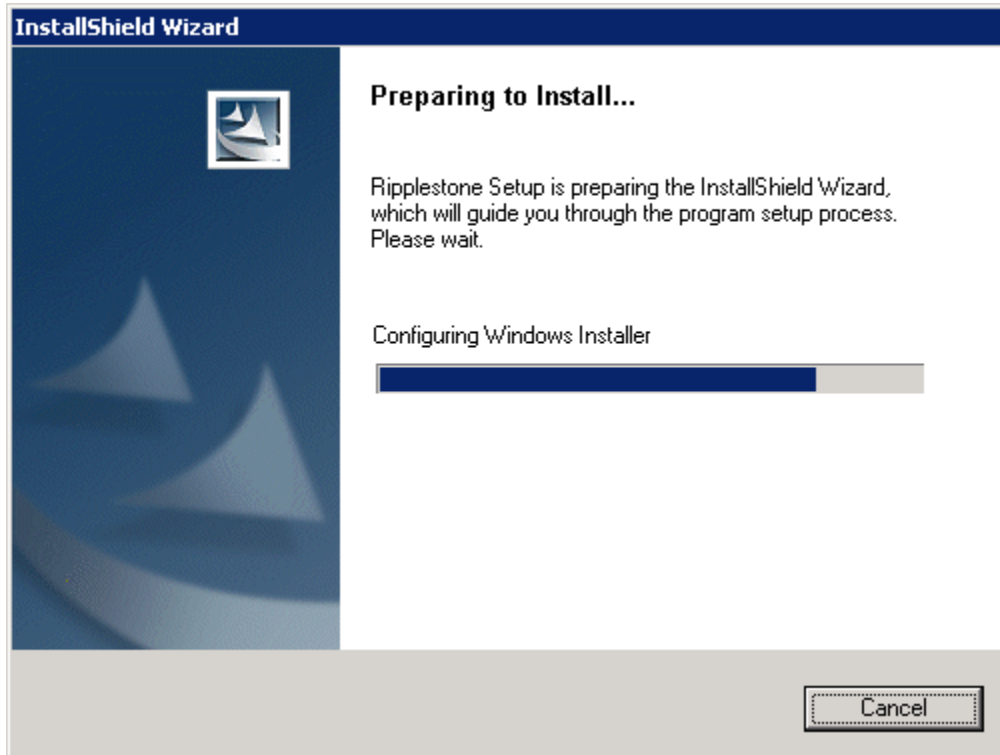


Figure 1 – First page of the InstallShield wizard

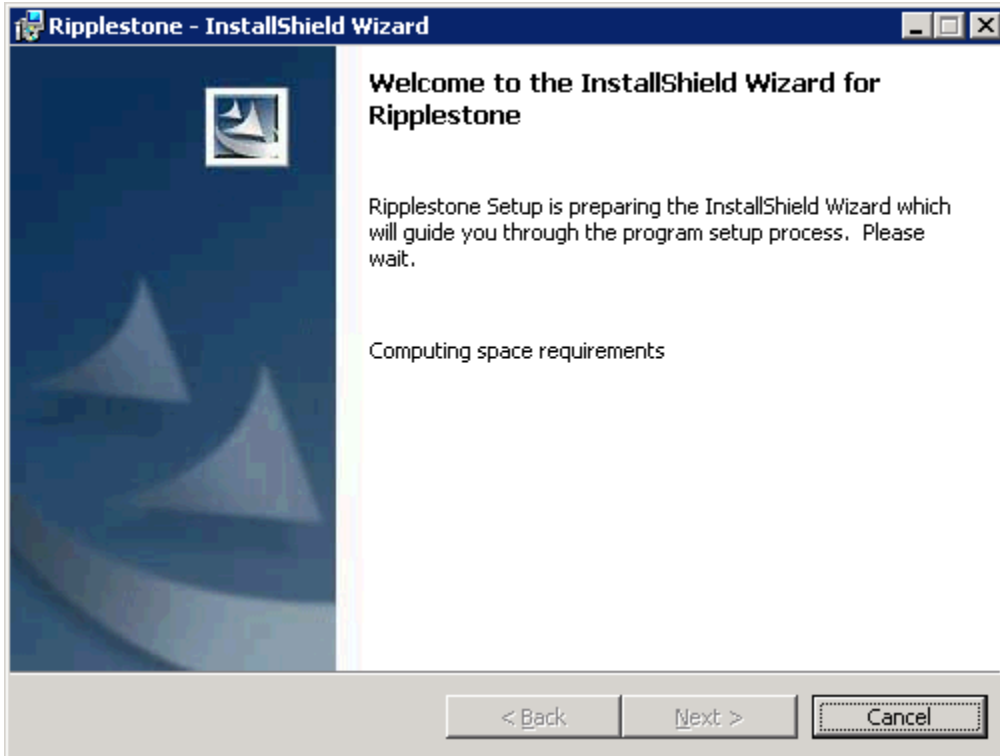


Figure 2 – Second page of the InstallShield wizard, no user options available

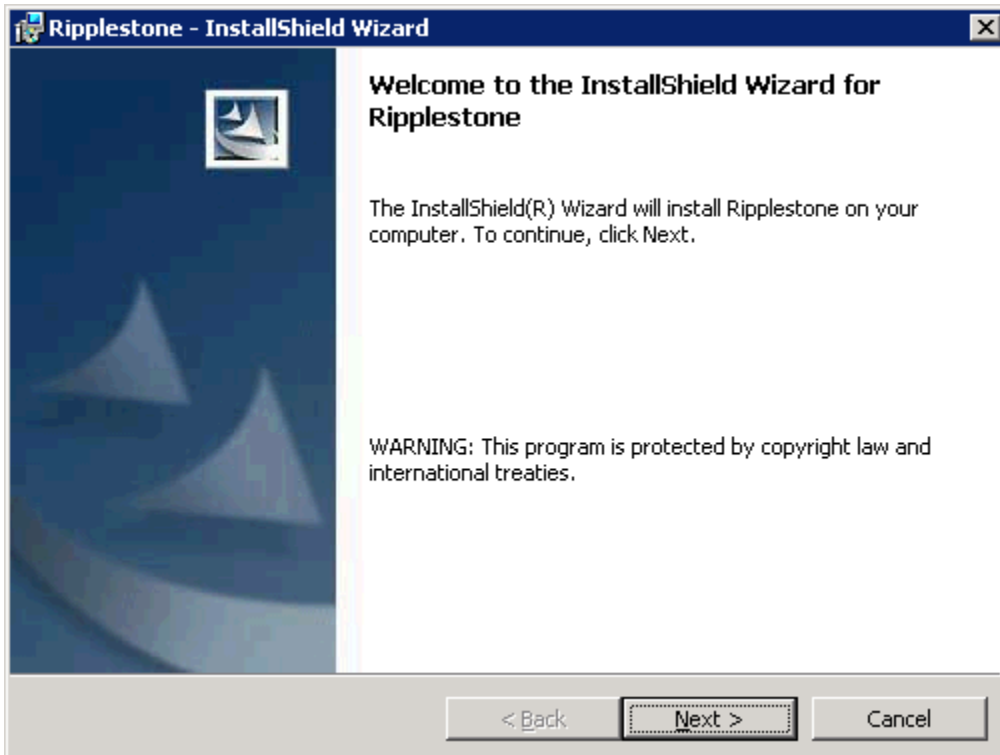


Figure 3 – Confirmation page to begin the install.

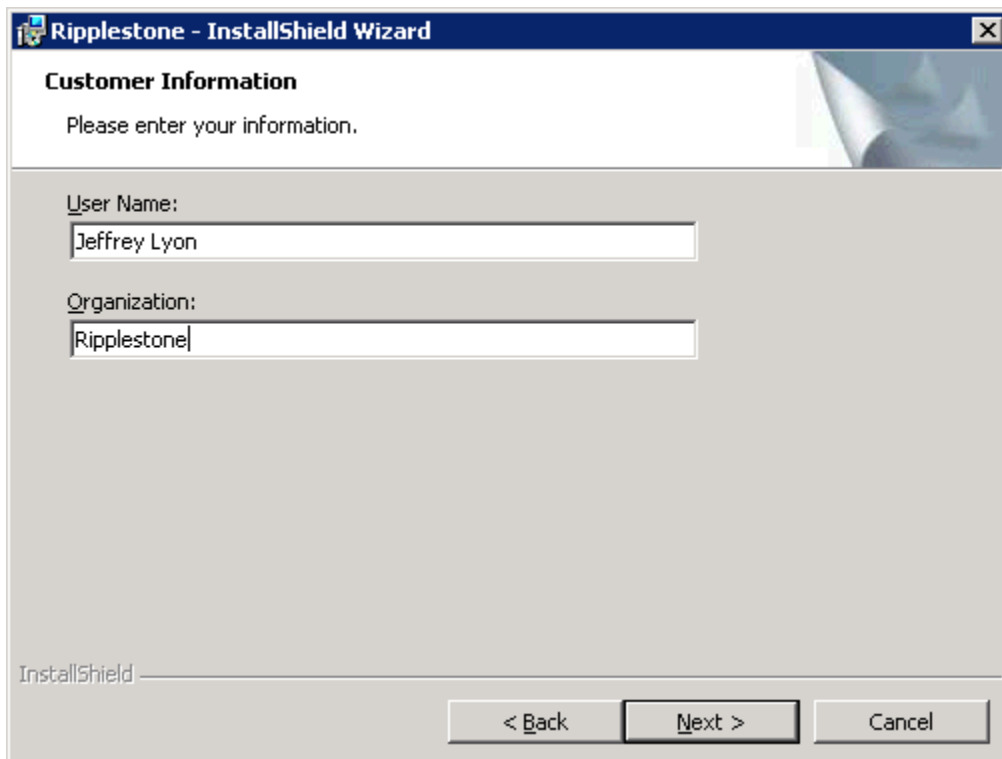


Figure 4 – Registration Information

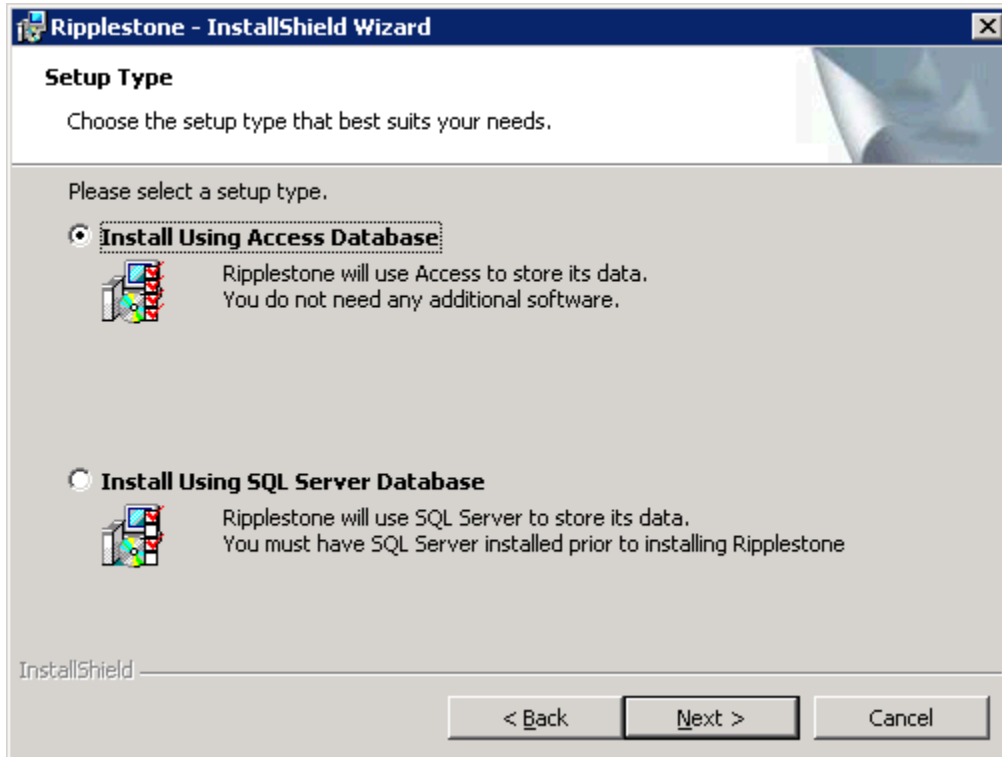


Figure 5 – Page to indicate if you would like to use Access or SQL Server for the Ripplestone database. If you select SQL Server, the wizard will prompt for the SQL Server information later in the setup process.

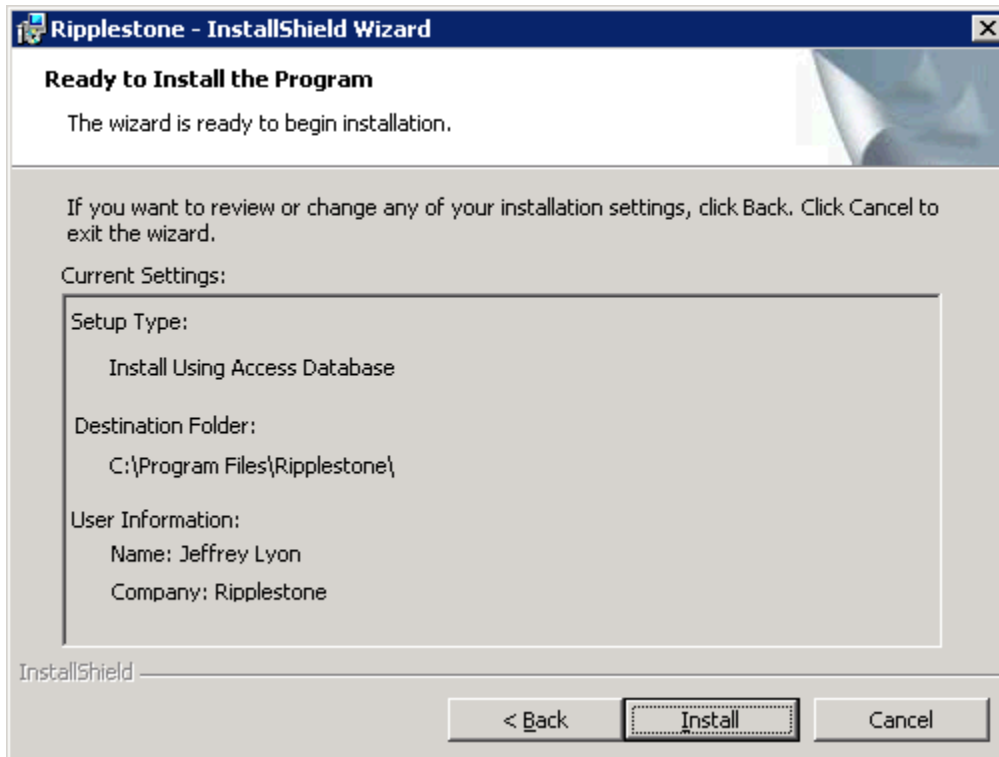


Figure 6 – Review page of settings. The install will begin copying files when the Install button is presses.

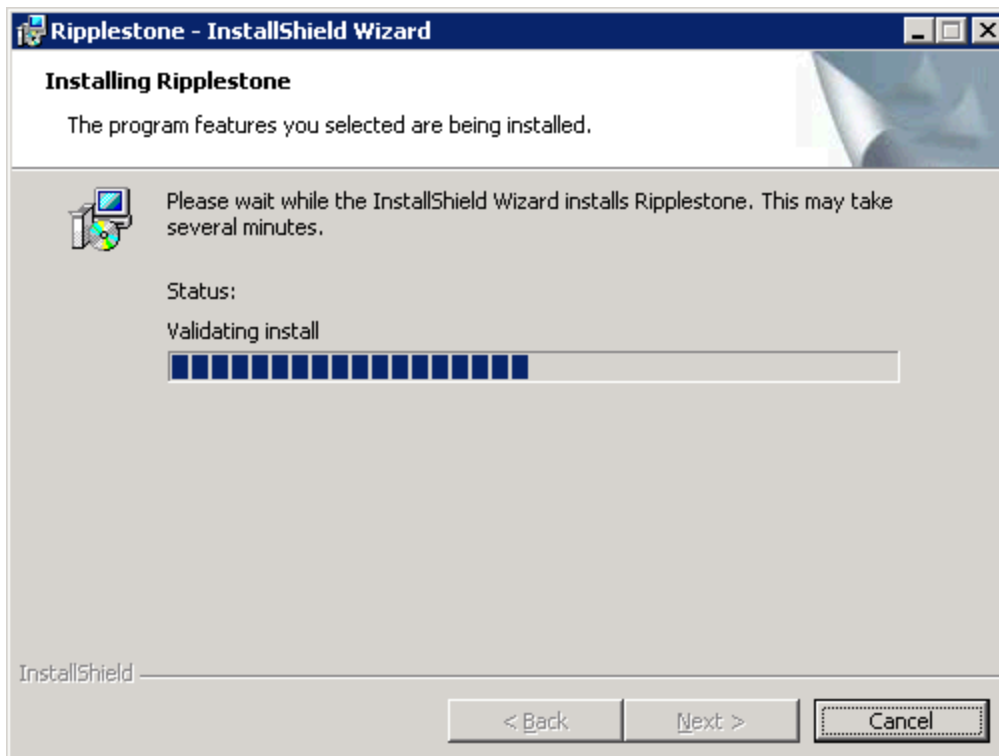


Figure 7 – Progress page.

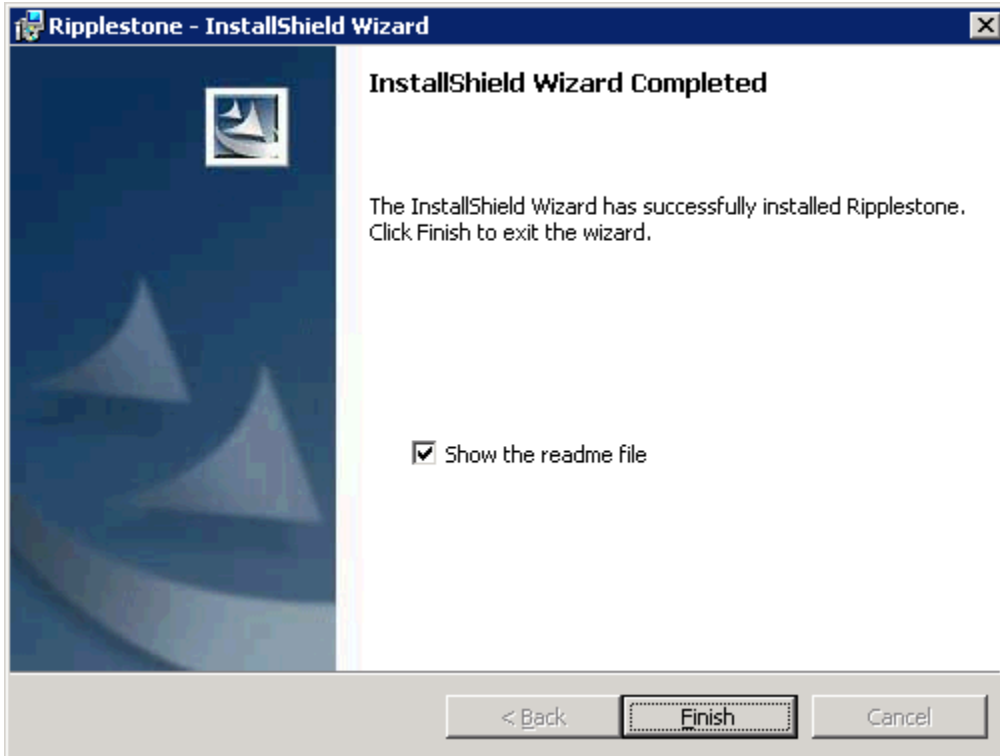


Figure 8 – Completion page. The readme file will have a link to login to the Ripplestone application.

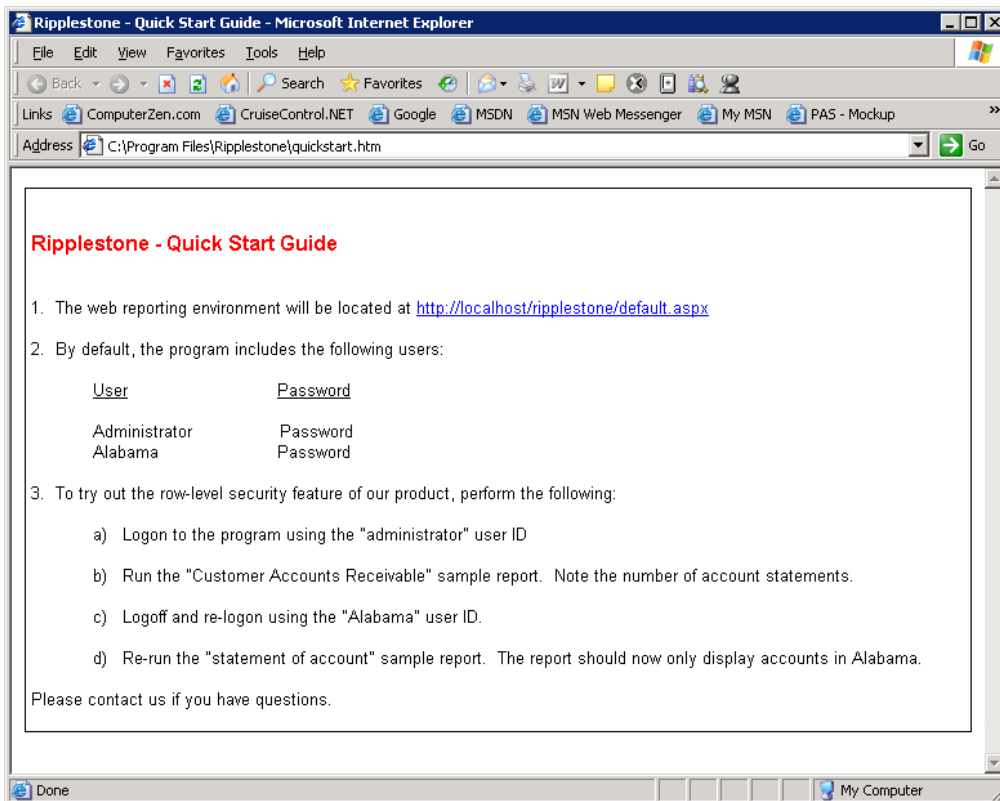


Figure 9 – The Quick start page has a link to the login page and some short examples.

SQL Server Install

This set of screen shots are for using Microsoft SQL Server as the database. These do not display figures 1 -4, since they are the same for either database.



Figure 10 – Page to select the SQL Server database option.

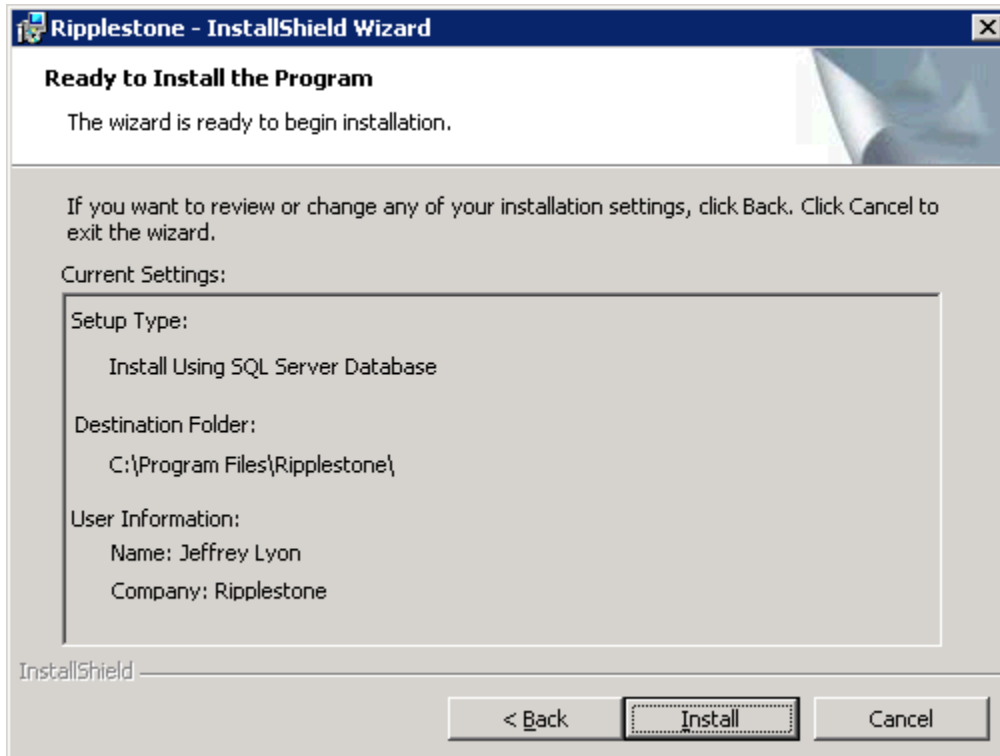


Figure 11 – Confirmation page before the install is started

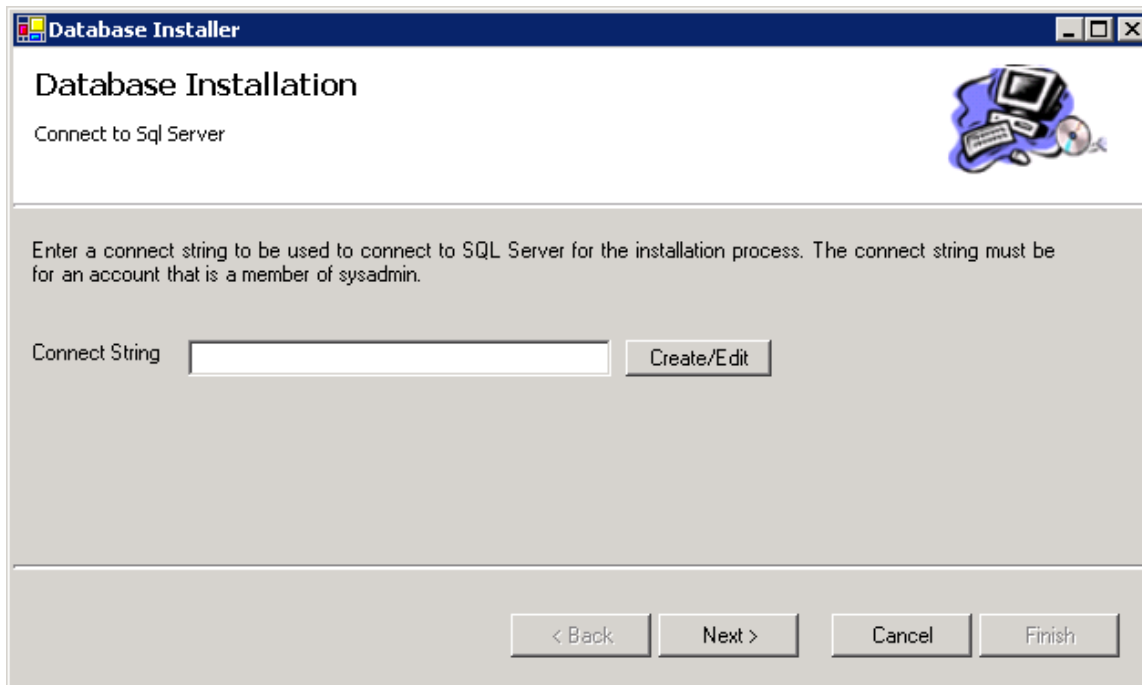


Figure 12 – First page of the SQL Server install wizard. This page needs a connection string that can be used in further steps to create the Ripplestone database. You can use the Create/Edit button to open a form to help build the connection string. The connection can be a connection string to any database on the server. The most common databases to connect to are Pubs or Northwind.

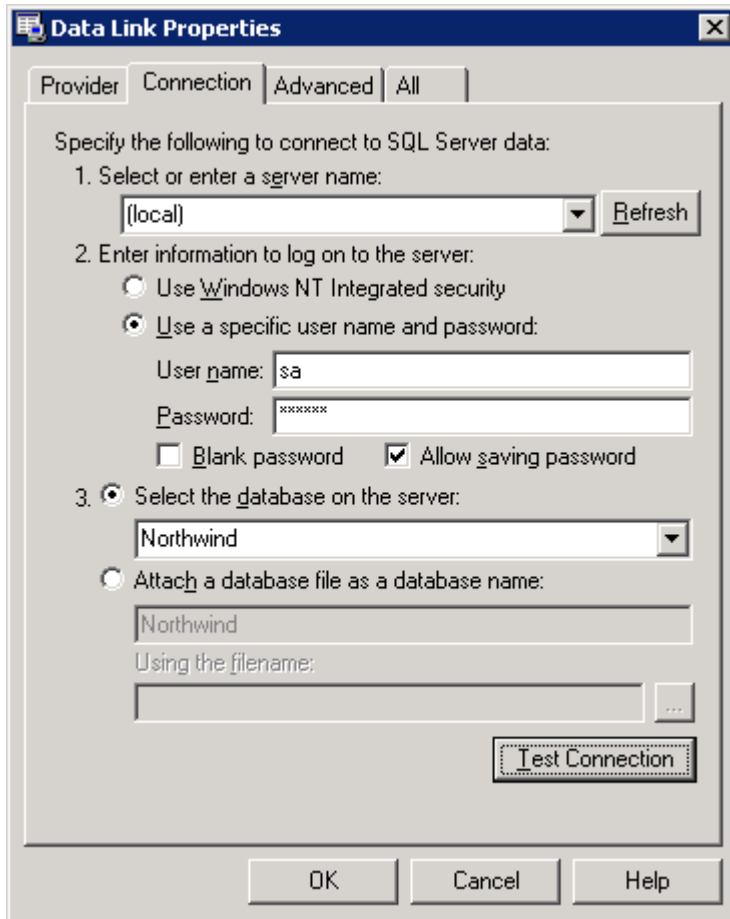


Figure 13 – This form is opened from the Create/Edit button on the previous page. This form is used to help build the connection string to any database on the server. Make sure that the user on the connection string has admin privileges and that you check the Allow saving password checkbox.

Note: This will not be the connection string used by Ripplestone, but will be used by the install database wizard to create the Ripplestone database.

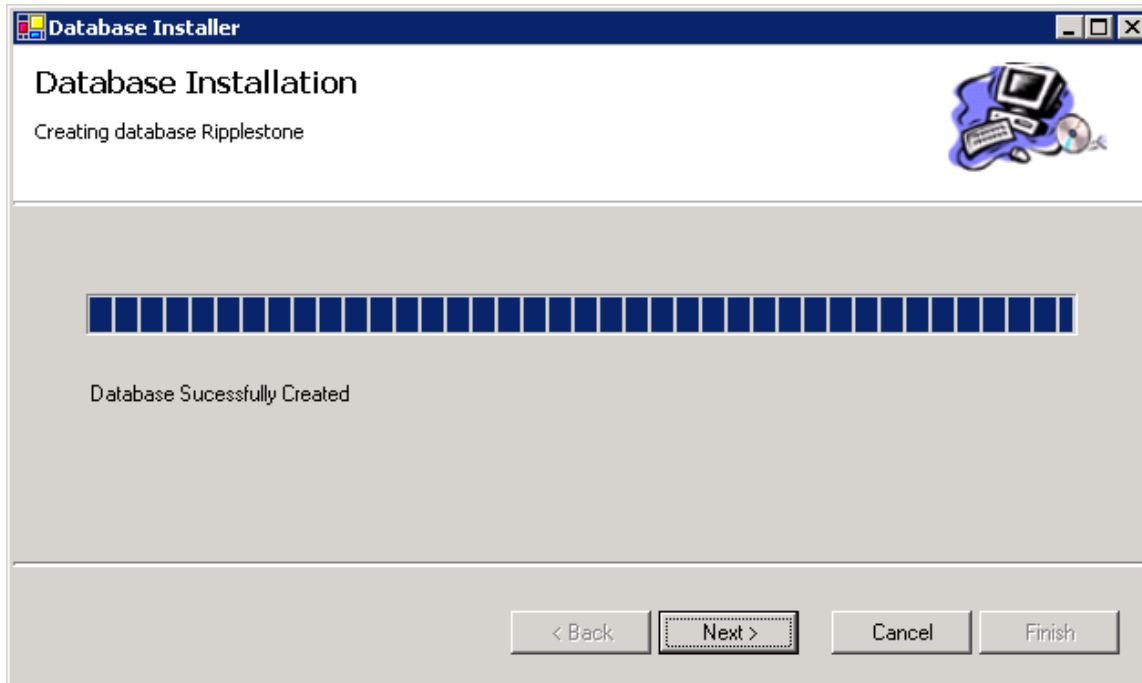


Figure 14– This page can take few minutes to complete. During this step the wizard is using the connection string created in the previous step to create and populate the Ripplestone database.

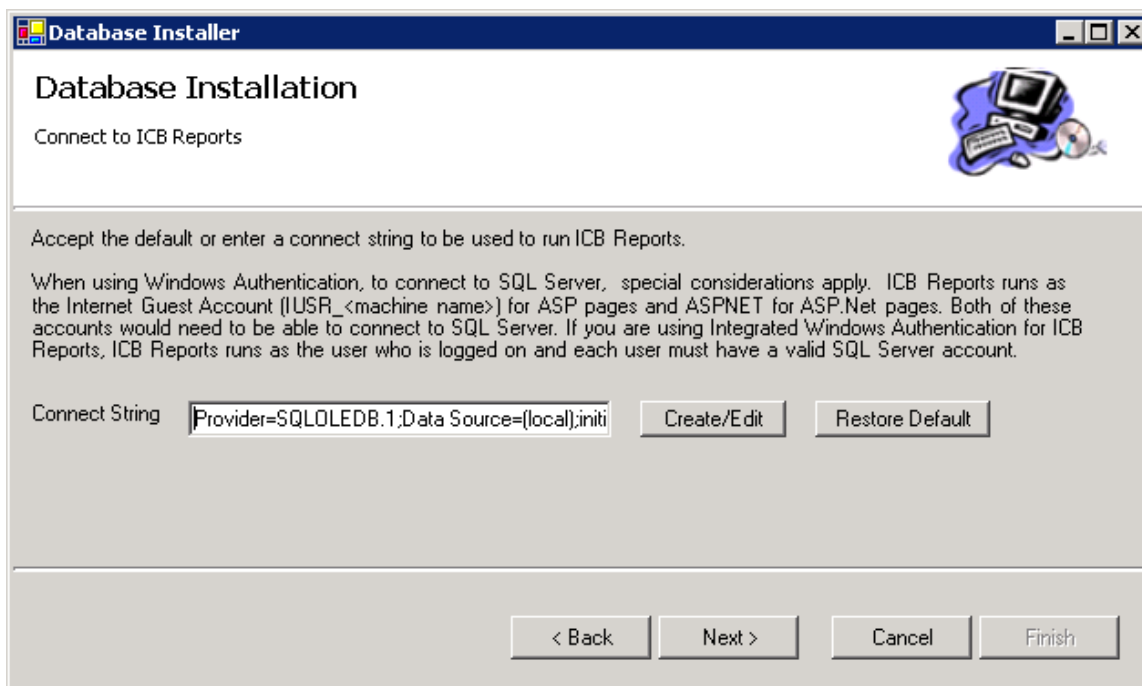


Figure 15– This page displays the connection string that will be used by Ripplestone to connect to the Ripplestone database. It is recommended that you use this connection string with a SQL Server user.

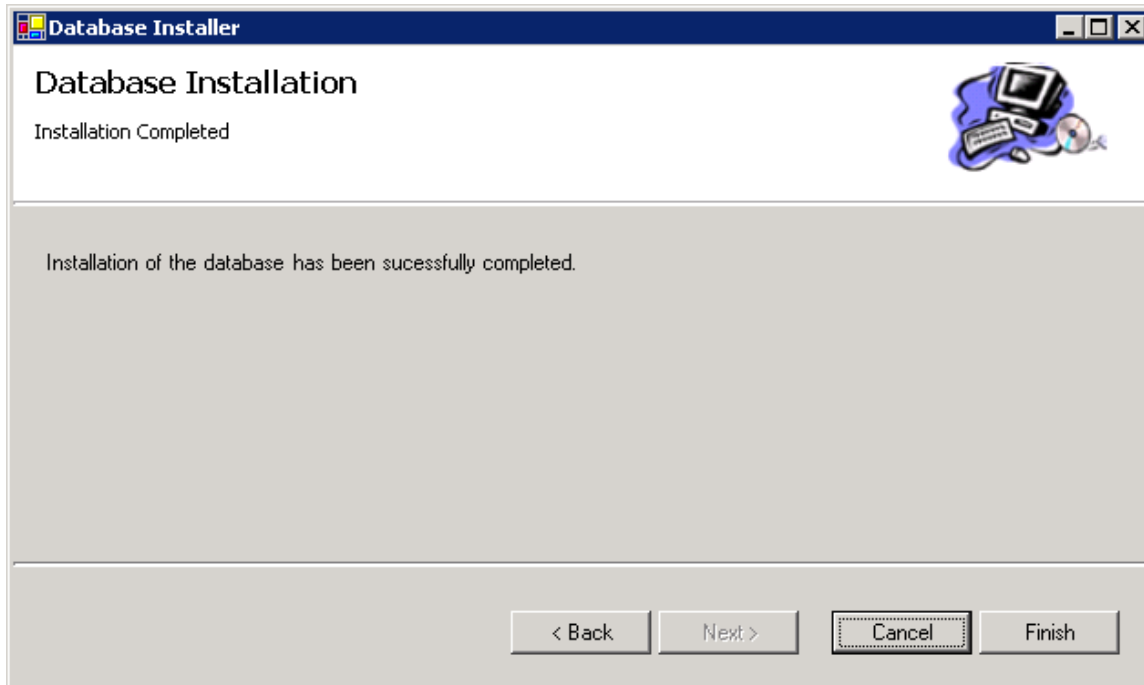


Figure 16– The last page of the SQL Server wizard.

Oracle

There are three folders for Oracle that need to have permissions set for the IIS user. The folders are

```
\oracle  
\oracle\ora92  
\oracle\ora92\bin
```

The folder names might be slightly different for your version of Oracle.

Each of these folders need to be given Full Control for the ASPNET user and NETWORK SERVICE for Windows 2003 Server.