

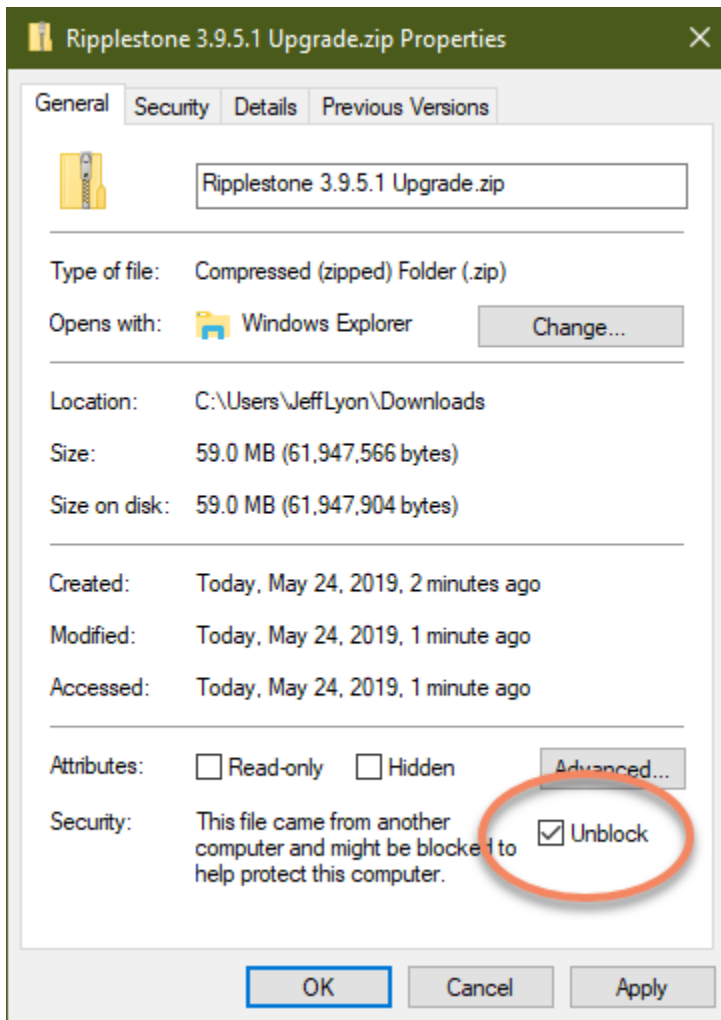
## Ripplestone 3.20.7 Patch

**Note: This version uses a new web.config file and it is recommended that you contact Ripplestone to help upgrade your existing web.config file to the new version.**

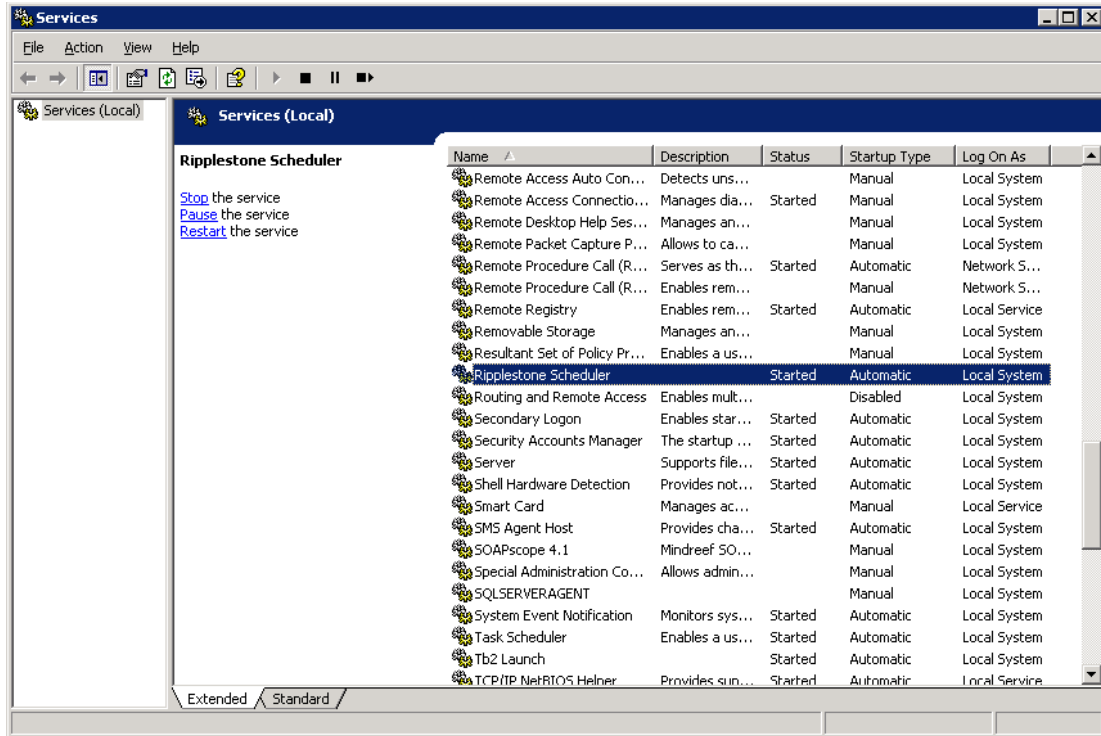
This patch is only needed for users of Ripplestone 3.2.4 or later who want to upgrade their installed version to the latest version. This patch will only work if you already have Ripplestone installed. If you have not installed Ripplestone you can download the full version from the web site. If you are running a Ripplestone version earlier than 3.2.4 contact us to upgrade, since this might be more involved.

To install this patch you will need to stop the Ripplestone Scheduler service, copy the files included in the patch and then restart the Ripplestone Scheduler service. Below is a step by step process to install the patch.

1. After you download the file you might need to unblock the downloaded files. Right click the downloaded files and select Properties. From the Properties dialog box click the Unblock button if it is displayed and then click the OK button.



2. Backup the current version by copying the C:\Sites\Ripplestone folder to a backup location or zipping the folder to a file. If you are using SQL Server for the Ripplestone database, backup the Ripplestone database too.
3. Stop the Ripplestone Scheduler Service. Open the Services utility by clicking on the Administrative Tools group and select Services. This will open the following utility. Locate the Ripplestone 3 Scheduler service and click on the Stop link. You can keep this utility open since you will need it to restart the service after the upgrade.



4. **Optional Step:** Install the [Crystal Reports Runtime Engine SP24](#). If you don't already have it installed Double click the CRRuntime\_32bit\_13\_0\_24.msi file to start the install of the Crystal Reports Runtime Engine. This install will upgrade the currently installed version.
5. Remove the old DevExpress files from the bin folder. From the C:\Sites\Ripplestone\bin folder remove any files that start with DevExpress. These will be replaced with the new update.
6. Unzip the Ripplestone 3.20.7.x Upgrade.zip file to the install folder for Ripplestone (C:\Sites\Ripplestone). This will overwrite the files in the folder. Make sure that the folder structure is retained. For example, make sure that the files in the Help folder are copied to the Help folder under the Ripplestone folder.
7. **Changes to the Web.config file** – This version is using a new web.config file. It is recommended that you contact Ripplestone to help convert your existing web.config file to the new version. If you would like to update the web.config file, replace any DevExpress entries with v19.2 and 19.2.5.0.
8. **Changes to the RSSchedule.exe.config file** – This version is using an updated RSScheduler.exe.config file. It is recommended that you contact Ripplestone to help convert your existing config file to the new version. If you would like to update the config file, look for an example in the bin folder. The new sections are from lines 3 -24.
9. To determine if the patch was successful, login to the application as Administrator and then from the Administration page click on the About link. The RSWebApp.dll should be version 3.20.7.x.
10. Using the Services utility, restart the Ripplestone Scheduler service by clicking on the Start link.